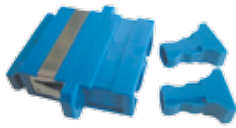


# ADAPTERS



SC Singlemode Duplex Adapter



SC/APC Singlemode Simplex Adapter



FC Singlemode Simplex Adapter



ST Singlemode Simplex Adapter



LC Singlemode Duplex Adapter



E2000 Multimode Simplex Adapter



SC Multimode Simplex Adapter



LC Singlemode Quad Adapter



MT-RJ Adapter



MTP™/MPO Adapter



SC-ST Multimode Duplex Adapter



FC-ST Singlemode Simplex Adapter

An Optic fiber adapter or uniter is used to mate two connectors together, usually mounted in a distribution panel or wall box.

Rougil Optic fiber adapters are precision made to ensure the perfect alignment of connectors, reducing insertion loss. In most cases the sleeve is the critical part of the system that aligns the ferrule parts of the connectors, keeping the fibers in perfect alignment.

Generally there are 2 types of alignment sleeve within an adapter, phosphor bronze for multimode or zirconia (ceramic) for singlemode.

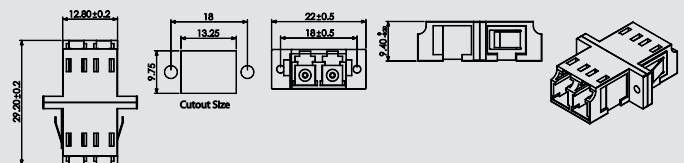
In the case of the MT-RJ and MTP™/MPO the alignment is carried out by two guide pins fitted to one of the connectors. The adapter is purely to support and lock the connectors together in the distribution panel or wall box.

## FEATURES

- Complies with IEC 61754-25
- Available as FC, SC, ST, LC, MT-RJ and MTP™/MPO
- Available in simplex, duplex, quad (LC) and hybrid versions
- High precision zirconia or standard phosphor bronze sleeves
- Low insertion loss
- High repeatability and stability
- RoHS, REACH compliant

## SPECIFICATIONS

	CERAMIC	PHOSPHOR BRONZE	CONFORMANCE
Insertion Loss (Typ)	0.1 dB	0.15 dB	IEC 61300-3-4
Mating Durability		500	IEC 61300-2-2
Receptacle Retention force		1N - 2.5N	IEC 61754-20
Operating temperature		-25 to +70, 12 cycles	IEC 61300-2-22



## ORDERING INFORMATION

To order Optic fiber assemblies the Rougil part number follows the following sequence.

AD			
	FC FC/APC SC SC/APC ST LC MT-RJ MU E2000	SM=Singlemode MM=Multimode	SI=Simplex DU=Duplex

Other adapters are available on request.

